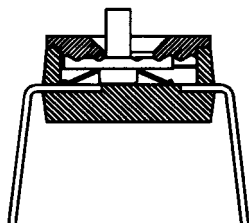
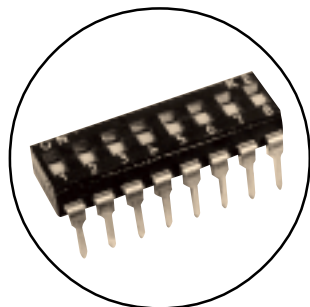




DSIC Series

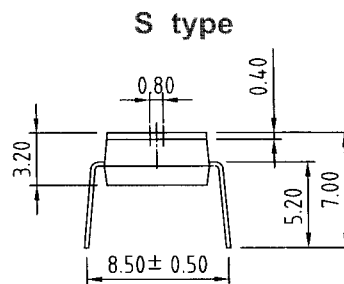
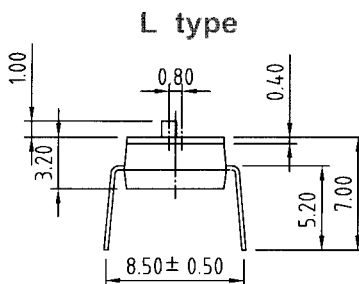
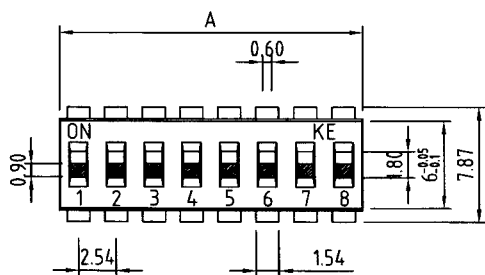
IC Type DIP SW



Features

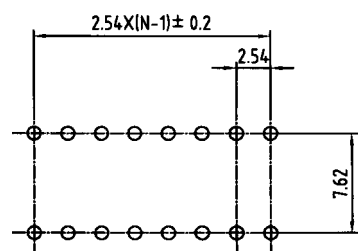
- All materials are UL 94V-0 grade, high temperature resistance plastic.
- Twin contact design to ensure stable contact.
- Gold-plated contact to ensure low contact resistance, Tin plated terminals to prevent contamination during soldering.

Dimensions (unit: mm)

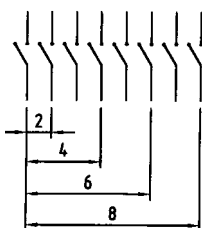


| No. of Positions | 2 | 3 | 4 | 5 | 6 | 7 | 8 | 9 | 10 | 12 | |
|------------------|------|------|------|-------|------|-------|-------|-------|-------|------|-------|
| A | mm | 5.08 | 7.62 | 10.16 | 12.7 | 15.24 | 17.78 | 20.32 | 22.86 | 25.4 | 30.48 |
| | inch | 0.2 | 0.3 | 0.4 | 0.5 | 0.6 | 0.7 | 0.8 | 0.9 | 1.0 | 1.2 |

P.C.B. Layout (unit: mm)



Circuitry



Material

| Part Name | Material | Finished |
|------------------|---------------|----------|
| Base | PPS UL94 V0 | Black |
| Cover | PPS UL94 V0 | Black |
| Actuator | Nylon UL94 V0 | White |
| Movable | Copper Alloy | Gold/Tin |
| Terminal Contact | Brass | Gold/Tin |
| Terminal | Brass | Gold/Tin |

Ratings:

Contact Rating

- Switching : 25mA at 24VDC
- Non-Switching : 100mA at 50VDC

Contact Resistance

- Initial : 50mΩ Max
- After life : 100mΩ Max
- Insulation Resistance : 100mΩ Max, Min at 100VDC
- Dielectric Strength : 500VAC for 60 seconds
- Switch Capacitance : 5pF Max at 1MHZ
- Operation Temperature : -30°C to +85°C
- Storage Temperature : -40°C to +85°C

Mechanical & Processing

- Operation Force : 1000gf Max
- Mechanical Life : 3000 cycles operations
- Resistance to Soldering : 250°C±10°C for 10 seconds

DSIC / DSPV Series

Environmental

Gold Testing

Switches under temperature at $-40^{\circ}\text{C}\pm 2^{\circ}\text{C}$ for 96 hours

Dry Heat Testing

Switches under temperature at $85^{\circ}\text{C}\pm 2^{\circ}\text{C}$ for 96 hours

Humidity

Per MIL-STD-202F, Method 103B, Test Condition B:

There shall be no evidence of corrosion and the insulation resistance shall be no less than 100 megaohms.

Vibration:

Per MIL-STD-202F, Method 204D, Test Condition A:

There shall be no opening of closed contacts or closing of open contacts in excess of 10 microseconds.

Shock:

Per MIL-STD-202F, Method 213B, Test Condition A:

There shall be no opening of closed contacts or closing of open contacts in excess of 10 microseconds.

Thermal Shock:

Per MIL-STD-202F, Method 107G, Test Condition A:

There shall be no evidence of physical damage or permanent change in electrical characteristics.

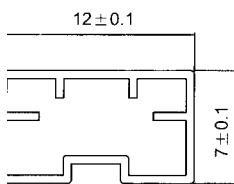
Salt-Spray Test

Per MIL-STD-202F, Method 101D, Test Condition B:

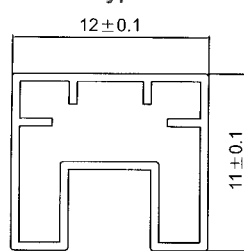
There are under $35\pm 2^{\circ}\text{C}$ in temperature and $5\pm 1\%$ salt-water concentration for 48 ± 1 hours.

Packing Specifications

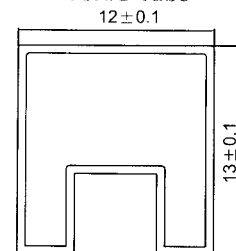
S Type Tube



A/H Type Tube

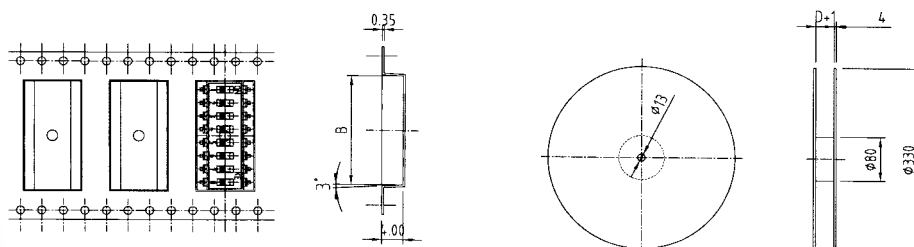


A/H/S Tube



Unit: Piece/per Tube

| Package | Pole | 2 | 3 | 4 | 5 | 6 | 7 | 8 | 9 | 10 | 12 |
|---------|------|-----|----|----|----|----|----|----|----|----|----|
| Tube | Q'TY | 100 | 66 | 50 | 40 | 33 | 28 | 25 | 22 | 20 | 16 |
| Tube | Q'TY | 83 | 58 | 42 | 35 | 30 | 26 | 23 | 20 | 18 | 15 |



Unit: Piece/per Reel

| Package | Pole | 2 | 3 | 4 | 5 | 6 | 7 | 8 | 9 | 10 | 12 |
|---------|------|-------|-------|-------|-------|-------|-------|-------|-------|-------|-------|
| Reel | Q'TY | 1,000 | 1,000 | 1,000 | 1,000 | 1,000 | 1,000 | 1,000 | 1,000 | 1,000 | 1,000 |